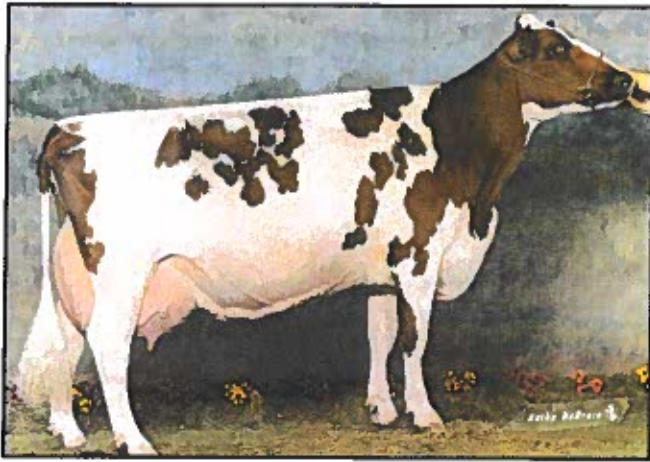
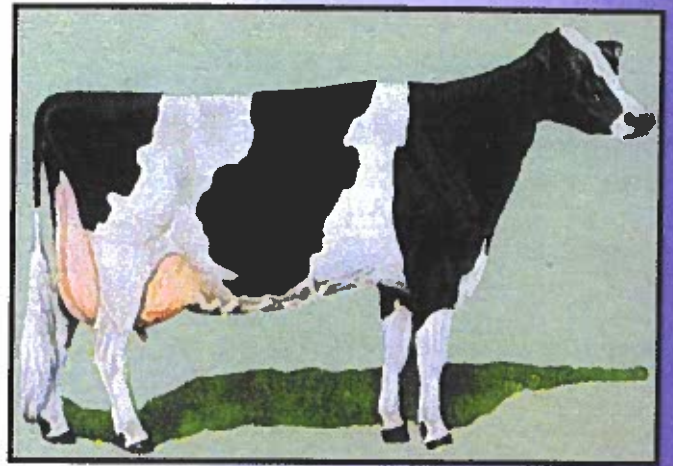


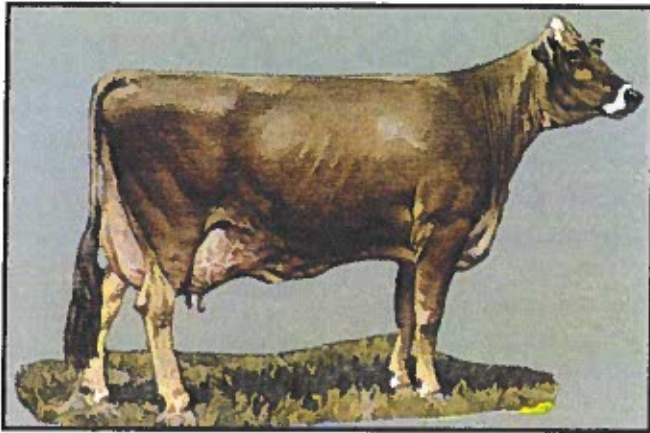
Breeds of Dairy Cows



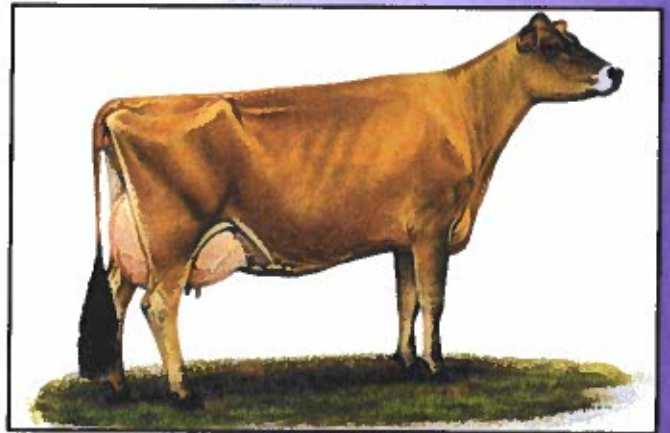
Ayrshire



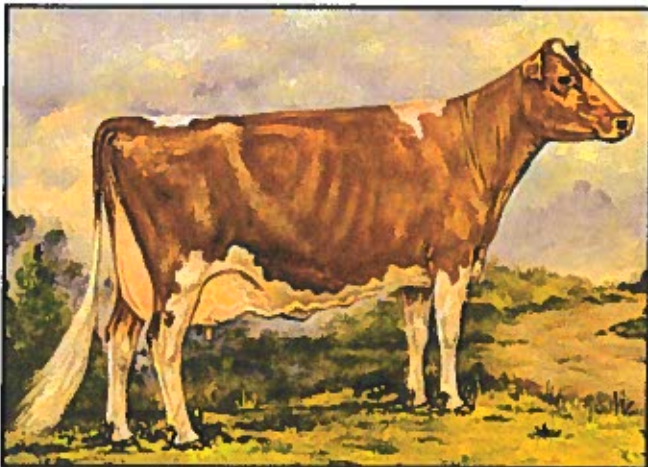
Holstein



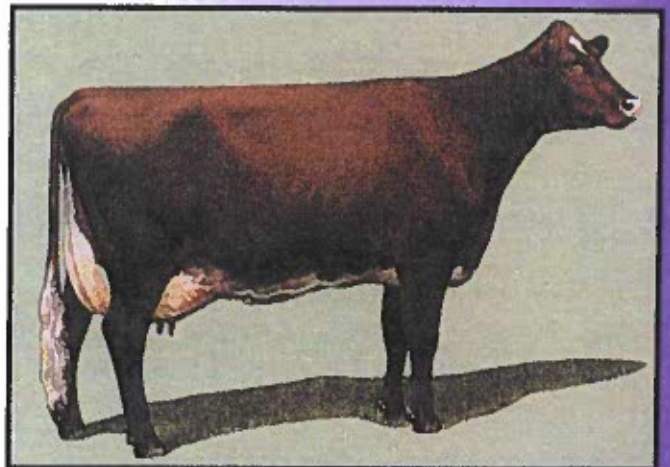
Brown Swiss



Jersey



Guernsey



Milking Shorthorn

AYRSHIRE

BROWN SWISS

GUERNSEY

HOLSTEIN

JERSEY

MILKING SHORTHORN

Developed in 1750 in the county of Ayr, Scotland, this breed is medium in size with average milk production. They are characterized by strongly-attached, well-shaped udders and are known for their extreme hardiness and good foraging ability. These cows may be red or mahogany and white.

Ayrshire

This breed originated in Switzerland and is large in size with high milk production. Developed to graze the mountains, these cows were bred to produce high protein milk for cheese. They are known for their strength, ruggedness, and good feet and leg structure. Their color pattern is solid brown with a black nose, switch, and hooves.

Brown Swiss



This breed was developed on an island in the English Channel to produce high fat milk for making butter. This breed is known for its gentle nature, and yellow-tinted milk. Fawn and white markings characterize this breed.

Guernsey

This breed originated in the Netherlands. It is the largest breed in size, and the most popular. They are known for producing the highest volume of milk of all the breeds.

They are black and white in color, but may be red and white.

Holstein

They were developed on an island in the English Channel. They are the smallest cows in size, and produce milk that is the highest in fat and protein. A shade of fawn with or without white markings characterizes this breed.

Jersey

This breed was developed from an English breed of cattle. Their breed association was formed in 1972. Intermediate in size and milk production, this breed is an efficient converter of feed into meat or milk, and has a high heat tolerance. These animals can be red, white, or roan in color.

Milking Shorthorn



Feed Tag

Brand Name	Skillathon Feeds	Product Name
	14% HefPel	
Directions for Use	Formulated for Growing Dairy Heifers	Medicated
Purpose of Medication	Medicated For increased rate of weight gain in pasture cattle (slaughter, stocker, feeder cattle and dairy and beef replacement heifers).	Active Drug Ingredient and Amount
Minimum Crude Protein Content	Active Drug Ingredients Lasalocid 80 g/Ton	
Minimum Crude Fat	Guaranteed Analysis	Guaranteed Analysis
Maximum Crude Fiber	Crude Protein (Min.) 14%	
	Crude Fat (Min.) 3%	
	Crude Fiber (Max) 9%	
	Acid Detergent Fiber (ADF)(Min.) 10%	
	Calcium (Ca) (Min.) 0.3%	
Minerals	Calcium (Ca) (Max.) 0.8%	
	Phosphorus (P) (Min.) 0.8%	
Vitamins	Selenium (Se) (Min.) 2.7 PPM	
	Vitamin A (Min.) 12,000 IU/lb.	
	Ingredients Grain Products, Plant Protein Products, Processed Grain By-Products, Forage Products, Dicalcium and Monocalcium Phosphate, Calcium Carbonate, Salt, Potassium Sulfate, Magnesium Sulfate, Vitamin A Supplement, Vitamin E Supplement, D-Activated Animal Sterol (Source of Vitamin D-3), Zinc Sulfate, Ferrous Sulfate, Manganese Sulfate, Copper Sulfate, Ethylene Diamine Dihydriodide, Cobalt Sulfate, and Sodium Selenite.	Ingredient Statement
Feeding Instructions	Feeding Directions Feed to dairy replacement heifers at a rate of 3.75 lb per head per day to provide 150 mg. of Lasalocid per head per day. This should be supplemented with a balanced ration of forages and concentrates. Specific questions should be addressed to your Skillathon Feeds representative.	
	Caution: Type C medicated feeds: The safety of Lasalocid in unapproved species has not been established; do not allow horses or other equines access to Lasalocid as ingestion may be fatal; Type B medicated feeds: Feeding undiluted, mixing errors, or inadequate mixing (recirculation or agitation of liquid supplements) resulting in excessive concentrations of Lasalocid could be fatal to cattle.	Precautionary Statement
Name and Address of Distributor	Manufactured By: Skillathon Feeds Columbus, Ohio 43210	
	Net Weight 50 Pounds (22.7 kilograms) BULK - Shown on Invoice	Net Weight Statement

Adapted from Kalmbach Feeds, Inc., Upper Sandusky, Ohio

Skillathon Feeds CowSupp

Formulated for Lactating Dairy Cows

Guaranteed Analysis

Crude Protein (Min.)	18%
Crude Fat (Min.)	5.0%
Crude Fiber (Max.)	8%
Acid Detergent Fiber (ADF)(Min.)	18%
Calcium (Ca) (Min.)	1.25%
Calcium (Ca) (Max.)	1.75%
Phosphorus (P) (Min.)	1.72%
Salt (NaCl) (Min.)	0.75%
Salt (NaCl) (Max.)	1.25%
Selenium (Se) (Min.)	0.7 PPM
Vitamin A (Min.)	6,000 IU/lb.

Ingredients

Grain Products, Plant Protein Products, Processed Grain By Products, Animal Protein Products, Animal Fat, Dicalcium and Monocalcium Phosphate, Calcium Carbonate, Salt, Magnesium Oxide, Potassium Sulfate, Magnesium Sulfate, Potassium Chloride, Vitamin A Supplement, Vitamin E Supplement, D-Activated Animal Sterol (Source of Vitamin D-3), Niacin, Zinc Sulfate, Ferrous Sulfate, Manganese Sulfate, Copper Sulfate, Ethylene Diamine Dihydrochloride, Cobalt Sulfate, and Sodium Selenite.

Feeding Directions

Feed 2.5 to 3.5 lbs. of 18% CowSupp for each 10 lbs of milk production depending on forage quality and body condition.

Manufactured By:
Skillathon Feeds
Columbus, Ohio 43210

Net Weight 50 pounds
(22.7 Kilograms)
BULK - Shown on Invoice

Adapted from Kalmbach Feeds, Inc., Upper Sandusky, Ohio

How to Read a Feed Tag

CowSupp feed tag questions.

1. What is the main ingredient in this feed?

2. Does this feed contain a medicated ingredient?

3. What is the minimum acid detergent fiber (ADF) level in this feed?

4. Does this feed contain Vitamin A?

5. What is the minimum crude fat level in this feed?

Answers to the CowSupp Feed Tag Questions:
1. Grain Products
2. No
3. 18%
4. Yes
5. 5.0%

