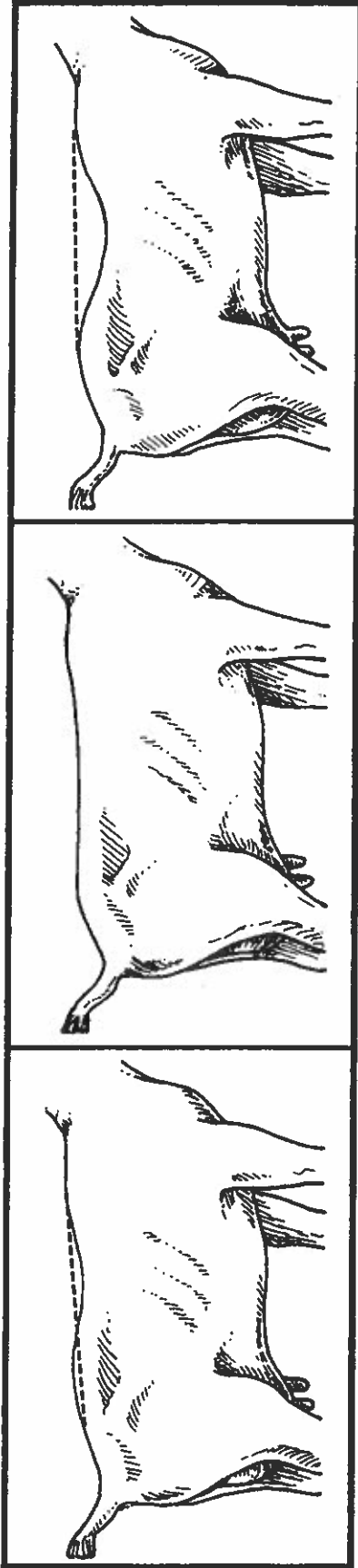


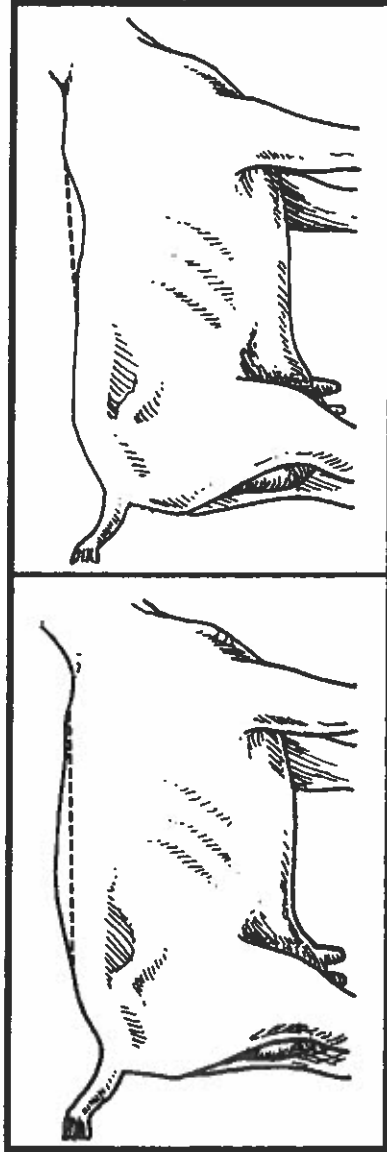
Goat Topline Structure



Wavy Back

Ideal Back

Sway Back



Roached Back

Weak in the Chine



Exploratory Learning: Educational Program

This component adapted from materials published in the *Dairy Goat Journal*, Helenville, WI

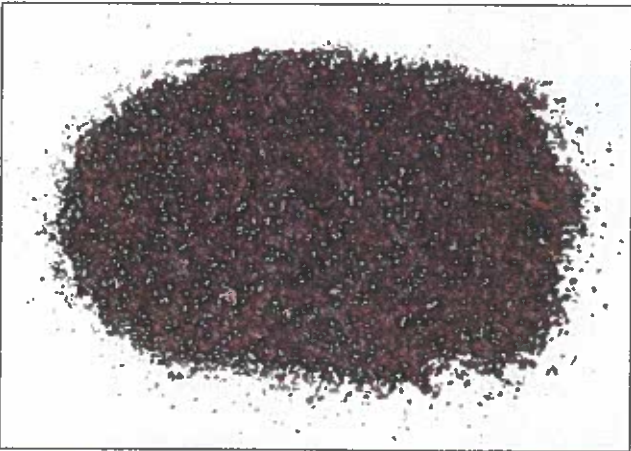
Product distribution through the Curriculum Materials Service



Feedstuffs



Whole-Grain Oats
Department of Animal Sciences, The Ohio State University.



Dry Molasses
Department of Animal Sciences, The Ohio State University.



Cracked Corn
Department of Animal Sciences, The Ohio State University.



Whole-Kernel Corn
Department of Animal Sciences, The Ohio State University.



Complete Pelleted Feed
Department of Animal Sciences, The Ohio State University.



Steam-Rolled Oats
Department of Animal Sciences, The Ohio State University.



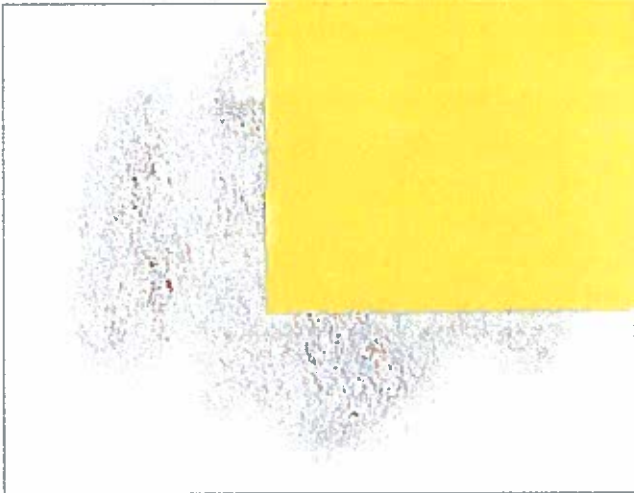


Dried Sugar Beet Pulp

Department of Animal Sciences, The Ohio State University



Department of Animal Sciences, The Ohio State University

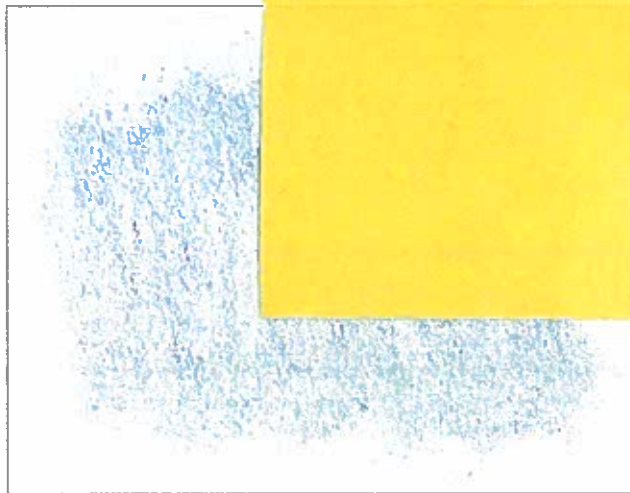


Hay Cube

Department of Animal Sciences, The Ohio State University

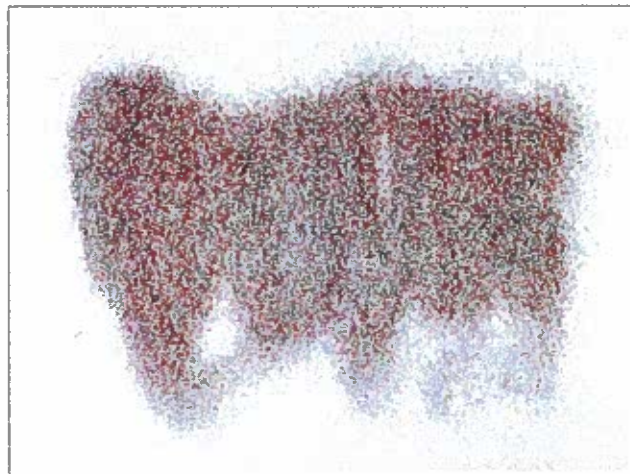


Department of Animal Sciences, The Ohio State University



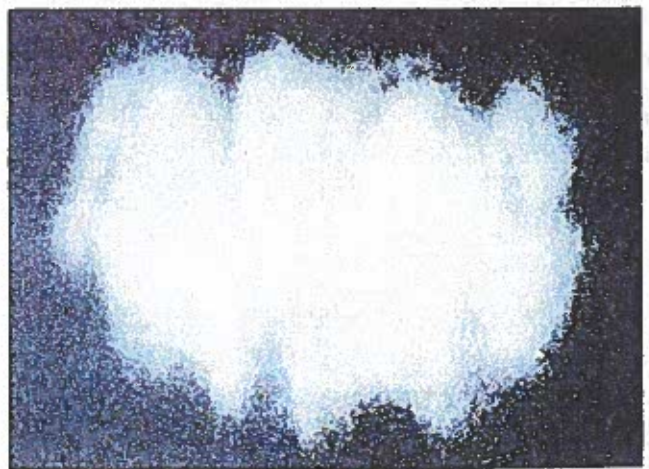
Trace Mineral Salt

Department of Animal Sciences, The Ohio State University



Department of Animal Sciences, The Ohio State University





White Salt

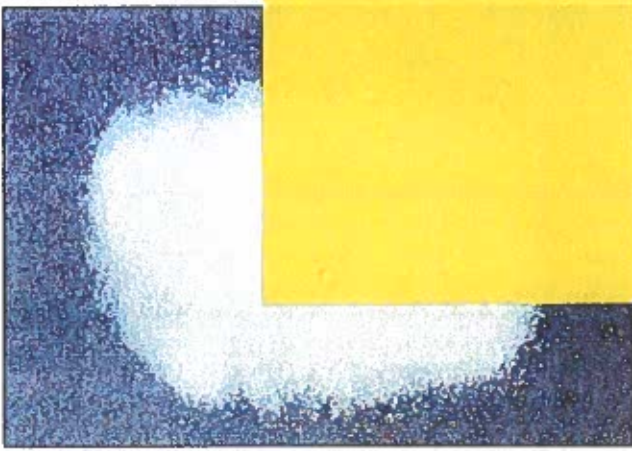
Department of Animal Sciences, The Ohio State University



Department of Animal Sciences, The Ohio State University



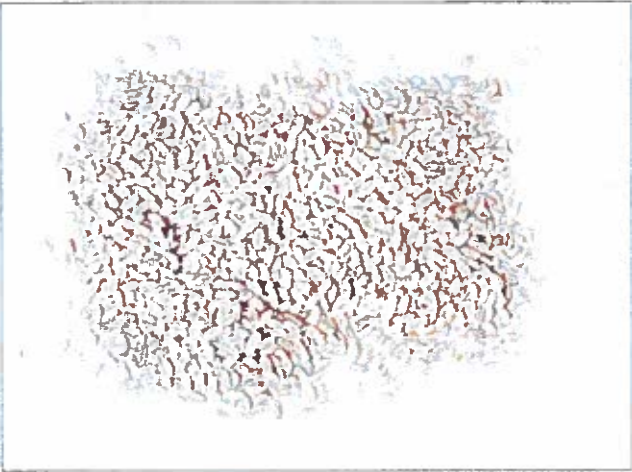
Department of Animal Sciences, The Ohio State University



Department of Animal Sciences, The Ohio State University



Department of Animal Sciences, The Ohio State University



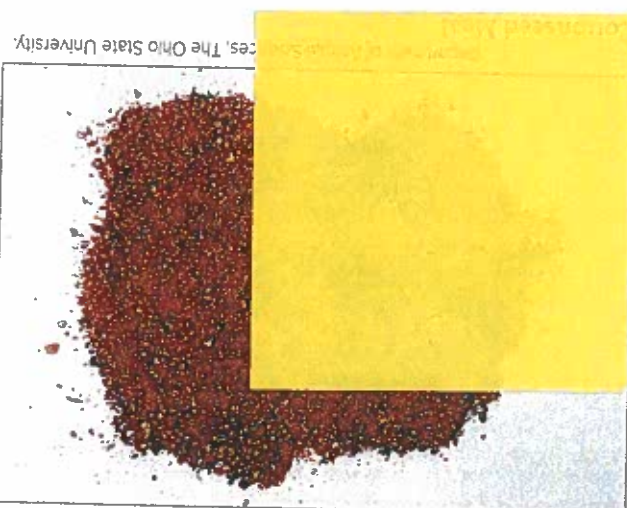
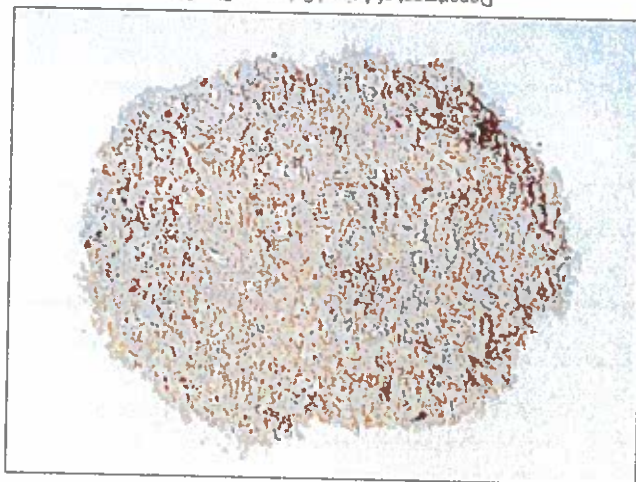
Whole-Grain Wheat

Department of Animal Sciences, The Ohio State University



Soybean Meal

Department of Animal Sciences, The Ohio State University.



Department of Animal Sciences, The Ohio State University.



Department of Animal Sciences, The Ohio State University.

**GOAT
FEED TAG
QUESTIONS**

4

**GOAT STARTER
MEDICATED**

Starter for Growing Kids

For the prevention of coccidiosis caused by *Eimeria ovina*, *Eimeria crandallis*, *Eimeria ovinoidalis*, *Eimeria ninakohlyakimovae*, *Eimeria parva* and *Eimeria intricata* in goats maintained in confinement.

Active Drug Ingredient

Lasalocid (As Lasalocid Sodium)..... 90 G/ton

Guaranteed Analysis

Crude Protein	Min 20.00%
Crude Fat	Min 2.50%
Crude Fiber.....	Max 10.00%
Calcium.....	Min 0.75%
Calcium.....	Max 1.25%
Phosphorus	Min 0.55%
Salt	Min 0.40%
Salt	Max 0.90%
Selenium.....	Min 0.30 ppm
Vitamin A.....	Min 2,000 IU/lb

Ingredients

Processed Grain By-Products, Grain Products, Plant Protein Products, Forage Products, Roughage Products, Molasses Products, Ground Limestone, Salt, Lignin Sulfonate, Potassium Sulfate, Magnesium Sulfate, Magnesium Oxide, Sodium Selenite, Calcium Propionate, Vitamin E Supplement, Vitamin A Acetate, Vitamin D-3 Supplement, Zinc Sulfate, Zinc Oxide, Sodium Molybdate, Manganous Oxide, Calcium Iodate, Cobalt Carbonate, Ferrous Sulfate

Feeding Directions

GOAT STARTER MEDICATED contains 45 mg of lasalocid per pound. Feed continuously as the sole ration to growing kids from 1 to 6 weeks of age at the rate of 0.33–1.55 pounds per head per day to provide not less than 15 mg and not more than 70 mg of lasalocid per head per day. Provide clean, fresh water at all times.

Caution

The safety of lasalocid in unapproved species has not been established; do not allow horses or other equine access to lasalocid as ingestion may be fatal; feeding undiluted or mixing errors resulting in excessive concentrations of lasalocid could be fatal to sheep.

Net Weight 50 Pounds (22.7 Kilograms)
or as shown on shipping document

Manufactured by Skillathon Feeds

1. **WHAT IS THE MAIN INGREDIENT (OR GROUP OF INGREDIENTS) IN THIS FEED?**
2. **IS THIS A MEDICATED FEED?**
3. **WHAT IS THE MINIMUM CRUDE PROTEIN LEVEL IN THIS FEED?**
4. **WHAT IS THE MAXIMUM AMOUNT OF CALCIUM IN THIS FEED?**
5. **IS CALCIUM CARBONATE INCLUDED IN THIS FEED?**
6. **HOW MANY POUNDS OF INGREDIENTS ARE INCLUDED IN THIS BAG?**
7. **IS THIS FEED FORMULATED FOR MARKET GOATS?**
8. **HOW MANY INTERNATIONAL UNITS (IU) OF VITAMIN A ARE IN EACH POUND OF THIS FEED?**
9. **WHO IS THE MANUFACTURER/ DISTRIBUTOR OF THIS FEED?**

Ohio State University Extension (Adapted from materials created by Dan Frobose, Agriculture and Natural Resources Educator, Wood County).

Figure 5.2. Sample feed tag.

